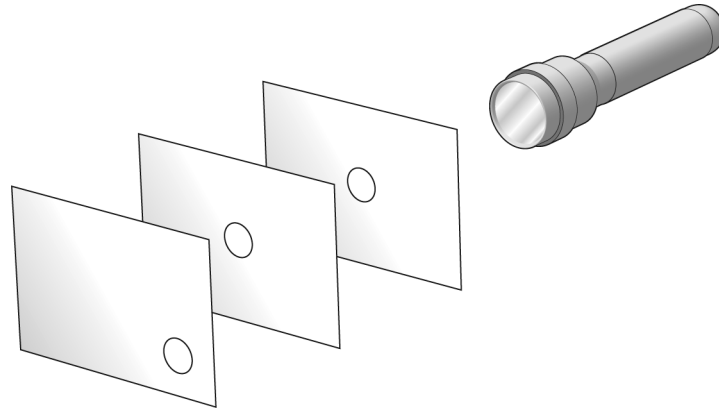


Shining a Flashlight

Light Travels in Straight Lines Cluster (Lesson 3)



Look carefully at the picture above. If the flashlight is turned on, will light pass through all three holes in the index cards? Explain why or why not.

TEACHER NOTE:

Use this assessment after teaching Lesson 3.

EVALUATION GUIDELINES:

When evaluating student answers, consider whether they include the following elements in their written explanations:

- Light will only travel through the first two holes closest to the flashlight.
- Light travels in straight lines and the hole in the last index card does not line up straight with the first two holes.

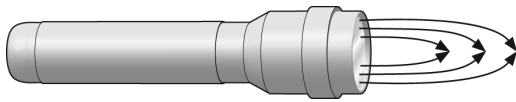
Light Travels in Straight Lines Cluster

Quick Check Items

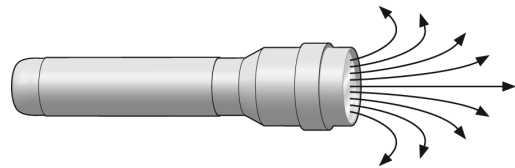
TEACHER NOTE: The following questions relate to the Light Travels in Straight Lines cluster. Use them after teaching the entire cluster, or select the applicable questions immediately following each lesson. You can also compile all of the Quick Check items into an end-of-unit assessment.

1. (Lesson 3) How does light travel?
 - a. Light travels in curved lines.
 - b. Light doesn't travel.
 - c. *Light travels in straight lines.*

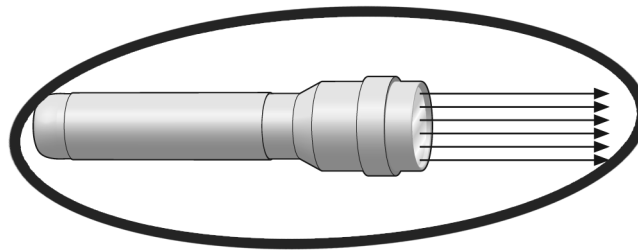
2. (Lessons 3) Circle the picture that **best** shows how light travels out from a flashlight.



Picture 1

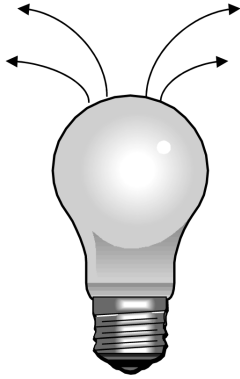


Picture 2

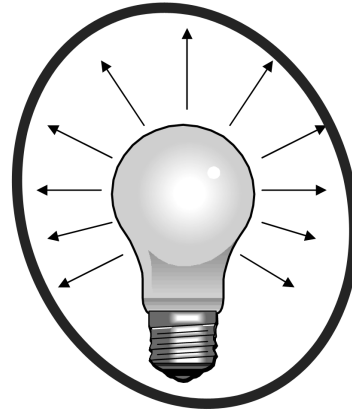


Picture 3

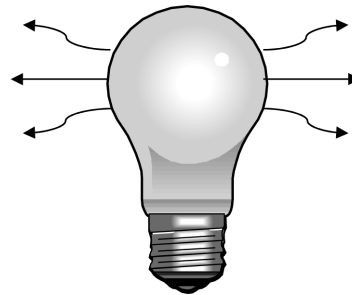
3. (Lesson 3) Circle the picture that best shows how light travels out from a light bulb.



Picture 1



Picture 2



Picture 3